

TB1016E

TravelBus TB1016E はUSB3.0接続のロジックアナライザと
プロトコルアナライザ両方の機能を備えた高性能ツール。
立野電脳(株)から即納可能です。

Acute TravelBus 2 in 1 Analyzer (Protocol & Logic)

- PC-based, **USB 3.0** interface/powered
- **200 MHz** timing/state analysis
- Digital channels : 16 (Data), 1 (Clock), 2 (I²C)
- Memory : PC RAM
- Data logger
- Real time data display and post-capture waveform display



96 x 74 x 24 mm³

• Module I

Bus analysis : DALI, HID over I²C, I²C, I²S, LIN, MDIO, PMBus, RS232, SMBus, SPI, USB1.1

• ~~Module II~~

~~Bus analysis : CAN, Modbus, ProfiBus, RS422, RS485~~

~~Differential channels : 2 (CAN), 4 (RS422/485)~~

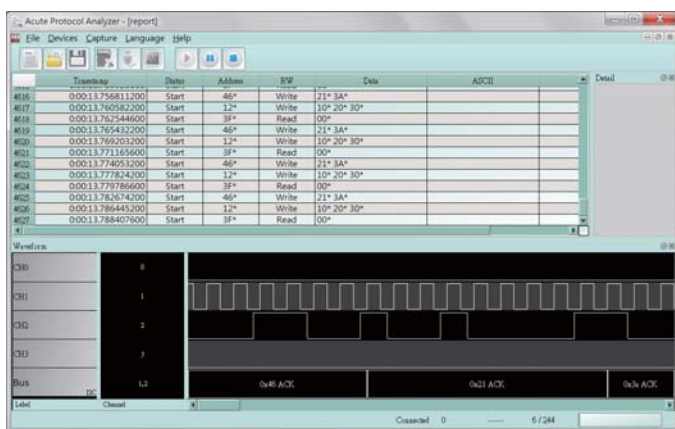
~~Stackable with Acute TravelScope DSO to form an MSO~~

• ~~Module III~~

~~Bus analysis : BiSS-C, PWM~~

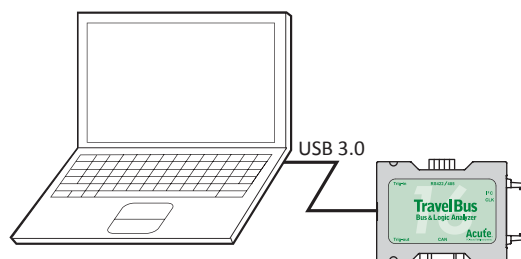
Model	Channels	Module	Memory	DSO stack
TB1016E	19	I	PC RAM	No
TB1016B	25	I, II	PC RAM	Yes
TB1016B+	25	I, II, III	PC RAM	Yes

Software Window



System Requirements

- USB 3.0 port
- XP, Win 7, 8, 10 (32 / 64 bits)



立野電脳(株)はAcute Technologyの国内正規代理店です。
お問い合わせは sales@dsp-tdi.com へどうぞ。

Acute

PC-based T&M Instruments

Acute Technology Inc.

Tel: +886-2-2999-3275 E-mail: service@acute.com.tw <http://www.acute.com.tw>

立野電脳 EXT営業部
E-mail : sales@dsp-tdi.com


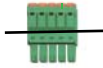




〒198-0063 東京都青梅市梅郷5-955 TEL.0428-77-7000 FAX.0428-77-7010

URL <http://www.dsp-tdi.com/>

TravelBus series

Model		TB1016E	TB1016B	TB1016B+	
Power	Power Source	USB bus-power (+5V)			
	Static Power Dissipation	0.75W			
	Max Power Dissipation	< 2.5W			
Hardware Interface		USB 3.0 (USB 2.0 Compatible)			
Timing Analysis (Asynchronous, Max. Sample Rate)		200 MHz			
State Clock Rate (Synchronous, External Clock)		200 MHz			
Channels (Data / CLK / I ² C / CAN / RS485)		16 / 1 / 2 / - / -	16 / 1 / 2 / 2 / 4		
Trigger	Resolution	5 ns			
	Channels	16 (Max.)			
	Conditions	Yes (4)			
	Pre/Post Trigger Setting	Yes			
	Pass Counter	Yes (0 ~ 65536 times)			
	Event Types	Pattern, Channel, Transition, Glitch, Width			
	Module I	DALI, HID over I ² C, I ² C, I ² S, LIN, MDIO, PMBus, RS232, SMBus, SPI, USB1.1			
	Module II	---	CAN, Modbus, ProfiBus, RS422, RS485		
	Module III	---	---	BiSS-C	
	Input port (for Stack)	---	TTL 3.3V		
	Output port (for Stack)	---	TTL 3.3V		
	Range	-6V ~ +6V			
	Resolution	50mV			
	Threshold	Accuracy	±100mV + 5%*Vth		
		Maximum	±40V DC, 15Vpp AC		
Input Voltage	Sensitivity	0.5Vpp @150MHz			
Impedance		200KΩ // <5pF			
Temperature	Operating Temperature	5° C ~ 45° C (41° F ~ 113° F)			
	Storage Temperature	-10° C ~ 65° C (-14° F ~ 149° F)			
Software features	Bus decode I	DALI, HID over I ² C, I ² C, I ² S, LIN, MDIO, PMBus, RS232, SMBus, SPI, USB1.1			
	Bus decode II	---	CAN, Modbus, ProfiBus, RS422, RS485		
	Bus decode III	---	---	BiSS-C, PWM	
Dimension	Length x Width x Height (mm ³)	96x74x24			
Lead Cable		24-pin			
Grippers		10	20		

Packing list

Item	Quantity	
1. TB1016 device	1	
2. Terminal Block (E/B)	0/1	
3. D-Sub Connector (E/B)	0/1	
4. Lead Cable (24-pin)	1	
5. USB 3.0 Cable	1	
6. Grippers	10	
...		
...		

Acute

PC-based T&M Instruments

Acute Technology Inc.
Tel: +886-2-2999-3275

お問い合わせは



立野電脳

EXT営業部

E-mail: sales@dsp-tdi.com

〒198-0063 東京都青梅市梅郷5-955 TEL.0428-77-7000 FAX.0428-77-7010

URL <http://www.dsp-tdi.com/>