

Acute TravelBus 2 in 1 Analyzer (Protocol & Logic)

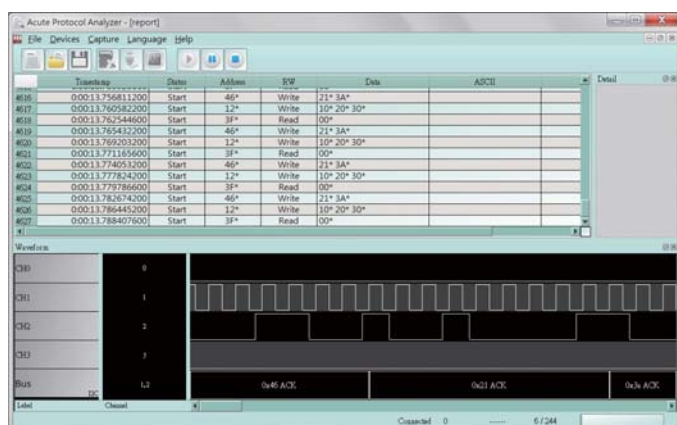
TravelBus TB2016Bは、USB3.0接続で利用するロジックアナライザとプロトコルアナライザの両方の機能を備えた高性能ツール。リアルタイムプロアナとロジアナの2動作モードがあり、ロジアナモードでは複数のバスをキャプチャ後、ソフトウェアでデコード表示可能。別売のDSOと連携してアナログ波形もGUI上で表示。



96 x 74 x 24 mm³

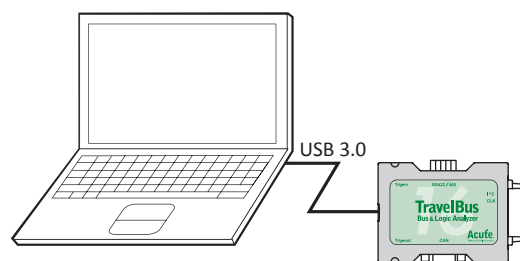
- Model : TB2016B
- PC-based, USB 3.0 interface/powered
- 25 Channels
 - Digital : 16 (Data), 1 (Clock)
 - Aux. : 2 (I²C/DP AUX)
 - Differential : 2 (CAN2.0/CAN-FD), 4 (RS422/485)
Isolated (>1000Vrms)
- 200 MHz* timing/state analysis
- Memory : PC RAM
- Real time data display and post-capture waveform display
- Protocol Analyzer : Biss-C, CAN2.0, CAN-FD, DALI, DP AUX, HID over I²C, I²C, I²S, LIN2.2, MDIO, Modbus, PMbus, Profibus, PWM, RS232, RS422, RS485, SMBus, SPI, USB1.1, USB PD 3.0
- Stackable with Acute TravelScope DSO to form an MSO
- Bus Decode : I²C, I²S, LIN2.2, SMBus, PWM, SMBus, SPI, UART, USB PD 3.0, ... (60+ decodes)

Software Window



System Requirements

- USB 3.0 port
- Win 7, Win 8, Win10 (32 / 64 bits)



立野電脳(株)はAcute Technologyの国内正規代理店です。
お問い合わせはsales@dsp-tdi.comへどうぞ

Acute

PC-based T&M Instruments

Acute Technology Inc.

Tel: +886-2-2999-3275 E-mail: service@acute.com.tw <http://www.acute.com.tw>

立野電脳 EXT営業部

E-mail : sales@dsp-tdi.com

〒198-0063 東京都青梅市梅郷5-955 TEL.0428-77-7000

URL <http://www.dsp-tdi.com/>



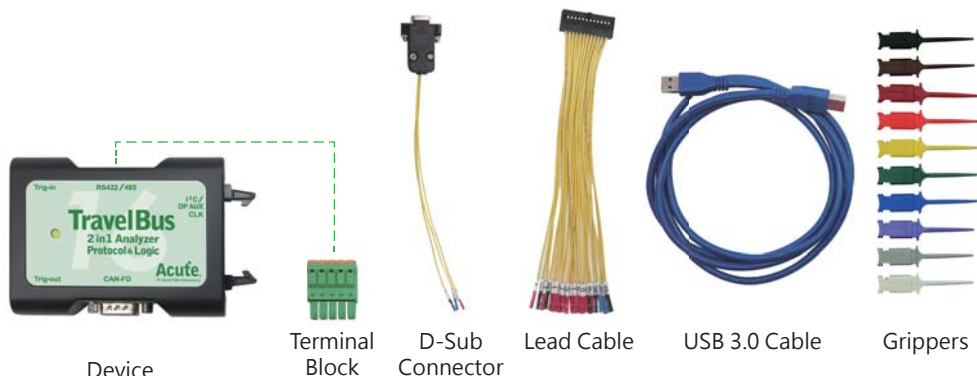
TravelBus series

Model	TB2016B	
Power	Power Source	USB bus-power (+5V)
	Static Power Dissipation	0.75W
	Max Power Dissipation	< 2.5W
Hardware Interface	USB 3.0	
Timing Analysis (Asynchronous, Max. Sample Rate)	200 MHz*	
State Clock Rate (Synchronous, External Clock)	200 MHz*	
Channels (Data, CLK, I ² C / DP AUX, CAN-FD, RS485)	16 / 1 / 2 / 2 / 4	
Trigger	Resolution	5 ns
	Channels	16 (Max.)
	Conditions	Yes (4)
	Pre/Post Trigger Setting	Yes
	Pass Counter	Yes (0 ~ 65536 times)
	Event Types	Channel, Pattern, Single, Width, Time-out, External
	Bus	CAN2.0, CAN-FD, DALI, DP AUX, HID over I ² C, I ² C, I ² S, LIN2.2, MDIO, Modbus, PMbus, Profibus, RS232, RS422, RS485, SMBus, SPI, USB1.1, USB PD 3.0
	Input port (for Stack)	TTL 3.3V
	Output port (for Stack)	TTL 3.3V
	Range	-6V ~ +6V
Threshold	Resolution	50mV
	Accuracy	±100mV + 5%*Vth
	Maximum	±40V DC, 15Vpp AC
Input Voltage	Sensitivity	0.5Vpp @150MHz
	Impedance	200KΩ // <5pF
Maximum input signal speed	Data Port: 14MHz, CAN Port: 1Mbps, I ² C Port: 400KHz, RS485 Port: Baud rate 20Mbps	
Temperature	Operating Temperature	5° C ~ 45° C (41° F ~ 113° F)
	Storage Temperature	-10° C ~ 65° C (-14° F ~ 149° F)
Protocol Analyzer	BiSS-C, CAN2.0, CAN-FD, DALI, DP AUX, HID over I ² C, I ² C, I ² S, LIN2.2, MDIO, Modbus, PMbus, Profibus, PWM, RS232, RS422, RS485, SMBus, SPI, USB1.1, USB PD 3.0	
Software features	Bus decode	1-Wire, 3-Wire, 7-Segment, AccMeter, ADC, APLM, BiSS-C, BSD, CAN 2.0/FD, CEC, Close Caption, CODEC_SSI, DALI 2.0, DMX512, DP Aux, EDID, Line Decoding, Line Encoding, HDLC, HDQ, HID over I ² C, I ² C, I ² C EEPROM, I ² S, ITU-R BT.656 (CCIR656), IrDA, JTAG, LCD1602, LED_Ctrl, LIN2.2, LPT, M-Bus, Math, MDIO, MHL Cbus, Microwire, Modbus, NEC IR, PECL, PMbus, Profibus, PS/2, PWM, QI, RC-5, RC-6, SGPIO, Smart Card, SMBus, SMI, SPI, SSI, ST7669, SWD, SWP, UART, UNI/O, USB 1.1, USB PD 3.0, Wiegand
		Dimension
Lead Cable	24-pin	
Grippers	20	

* Measure signal under 14 MHz ONLY due to data transmission limitation.

Packing list

Item	Quantity
1. TB2016B device	1
2. Terminal Block	1
3. D-Sub Connector	1
4. Lead Cable (24-pin)	1
5. USB 3.0 Cable	1
6. Grippers	20



Software download :
<http://www.acute.com.tw>

立野電脳(株)はAcute Technologyの国内正規代理店です
 お問い合わせはsales@dsp-tdi.comへどうぞ。

Acute Acute Technology Inc.
 PC-based T&M Instruments Tel: +886-2-2999-3275 E-mail: service@acute.com.tw <http://www.acute.com.tw>

立野電脳 EXT営業部
 E-mail: sales@dsp-tdi.com
 〒198-0063 東京都青梅市梅郷5-955 TEL.0428-77-7000

URL <http://www.dsp-tdi.com/>